



# Product Catalogue

2008







## Table of contents

<b>STENTOFON Critical Communication over IP - CCoIP .....</b>	<b>4</b>
<b>Stations.....</b>	<b>5</b>
IP Stations and Accessories .....	5
Master Stations.....	8
Flush Mount Stations.....	10
Control Room Master Station and Accessories .....	12
Industrial Stations .....	13
Accessories for Industrial Stations .....	14
Tamper and Vandal Resistant Stations.....	15
Station Kits .....	17
<b>Exchanges.....</b>	<b>18</b>
<b>Licenses, SIP &amp; Gateways .....</b>	<b>19</b>
<b>Upgrade Kits, Feature Cards &amp; Accessories.....</b>	<b>21</b>
<b>Public Address .....</b>	<b>25</b>
<b>System Management Software.....</b>	<b>29</b>
AlphaPro.....	29
AlphaVision.....	29
<b>Pro700 - Your hidden business asset.....</b>	<b>30</b>
<b>Stations.....</b>	<b>31</b>
Master Stations.....	31
Substations.....	32
Tamper Resistant Stations.....	32
Accessories .....	33
Station Kit .....	35
Interface Units .....	35
Power Supplies.....	36
<b>Bi-Way - Security Window Communication System .....</b>	<b>37</b>
Starter Kit.....	38
Accessories .....	39
Power Supplies.....	39

# STENTOFON Critical Communication over IP - CCoIP<sup>®</sup>

- Intercom IP to the edge - using IP to its full potential

## Hi-fi Audio Quality

Voice is carried within the system at Hi-fi bandwidth (18kHz) and is much clearer than any telephone. Also when telephone trunks (E1/T1) or IP connections link exchanges (between buildings or even countries), our G.722 codec option enables a far-better-than-telephone quality to be maintained.

## Reliability, Resilience and System Integrity

Unlike a telephone system, the AlphaCom E continuously monitors all connections – even to substations – for complete integrity. When you need to make that one vital call the system works. The system has an excellent reputation for reliability, and with both IP and E1/T1 networking, offers the possibility of alternative routing to avoid network problems.

## Investment Protection

Our most up-to-date exchanges make full use of the latest in TCP/IP technology, yet maintain backward compatibility with stations that were installed 40 or so years ago. That is what we call 'future-proof'. We regularly receive calls from

customers who have systems that have been in service for 20, 25 or even 30 years. Our policy of backward compatibility means that you can be sure that your investment will pay itself back many times over during the life of the equipment.

## Low Cost of Ownership

The inherent reliability and longevity keeps the baseline cost to a minimum. Maintenance costs too are kept down, with the possibility of remote programming and system diagnostics over IP. It adds up to a package which, once installed, is going to stay in service with very little attention for a long time.

## Financial Trading Systems

High-capacity, exchanges allow trading systems to be built up with thousands of users. A comprehensive feature set, including group calls, all-call, call forward, etc. sits comfortably within the most advanced corporate communications environment. System integrity is enhanced with powerful site interconnection capabilities, alternate routing over IP and/or E1, live fault management and voice recording.



**New**

1008010000

**IP CRM V Master**

- \* Made for STENTOFON Critical Communication over IP - CCoIP®
- \* Large high contrast display with backlight for excellent readability
- \* Superb audio technology
- \* Call request queue
- \* Four programmable Direct Access Keys (DAK) with status notification lights
- \* Four function keys with labelling on the display
- \* White light behind all keys for excellent readability in dark environments
- \* Noise cancelling gooseneck microphone
- \* Optional handset unit
- \* Integrated Web server for easy configuration and monitoring
- \* Remote automatic software update

Size (WxHxD) in mm: 125x280x50

Weight in g: 370

Expected delivery from 1/6-2008

**New**

1008031000

**IP Flush Master, display**

- \* Made for STENTOFON Critical Communication over IP - CCoIP®
- \* Large high contrast display with backlight for excellent readability
- \* Superb audio technology
- \* Optional handset unit
- \* Integrated Web server for easy configuration and monitoring
- \* Remote automatic software update

Size (WxHxD) in mm: 125x280x50

Weight in g: 370

Expected delivery from 1/6-2008

**New**

1008032000

**IP Flush Master, display and gooseneck**

- \* Made for STENTOFON Critical Communication over IP - CCoIP®
- \* Large high contrast display with backlight for excellent readability
- \* Superb audio technology
- \* Noise cancelling gooseneck microphone
- \* Optional handset unit
- \* Integrated Web server for easy configuration and monitoring
- \* Remote automatic software update

Size (WxHxD) in mm: 125x280x50

Weight in g: 370

Expected delivery from 1/6-2008

**New**

1008015000

**IP OR Master, display**

- \* Made for STENTOFON Critical Communication over IP (CCoIP®)
- \* Large high contrast display with backlight for excellent readability
- \* Flat chemical resistant and anti-bacterial front surface for easy cleaning
- \* Superb audio technology – possible to talk and listen at a distance (5m)
- \* Integrated Web server for easy configuration and monitoring
- \* Remote automatic software update

Size (WxHxD) in mm: 125x280x50

Weight in g: 370

Expected delivery from 1/6-2008

**New**



1008097100

**Handset for IP Flush Masters**

Additional module for IP CRM V Master.

Expected delivery from 1/6-2008

**New**



1008093000

**IP Master Station Kit, PCB**

This is the same PCB as is used in the 1008010000. Intended for local manufacturing of IP-CCoIP stations.

Expected delivery from 1/6-2008



1008041100

**IP Weather and Vandal Resistant IP Substation**

with 1 vandal proof button.

- \* Weather and vandal resistant
- \* Remote software upgrade, configuration and monitoring
- \* Dual Ethernet ports for daisy chaining IP stations or connection of other IP devices
- \* Possible connection to external IP video camera
- \* One relay output for door lock control or flash strobe light, etc.

Size (WxHxD) in mm: 92 x 180 x 54

Weight in kg: 0.8



1008098100

**Flush Mount Back Box for 1008041100**

Size (WxHxD) in mm: 80 x 168 x 50

Weight in kg: 0.8



1008098000

**On Wall Mount Back Box for 1008041100**

Size (WxHxD) in mm: 92 x 180 x 52

Weight in kg: 0.8



1008051000

**IP Weather and Vandal Resistant IP Substation**

for 3 gang Back Box with 1 red mushroom vandal proof button.

- \* Weather and vandal resistant flush mount design
- \* Remote software upgrade, configuration and monitoring
- \* Dual Ethernet port for daisy chaining IP stations or connection of other IP devices
- \* Possible connection to external IP video camera
- \* One relay output for door lock control or flash strobe light, etc.

Size (WxHxD) in mm: 114 x 160 x 63

Weight in kg: 0.8



1008098300

**3 gang Flush Mount Back Box for 1008051000**

Size (WxHxD) in mm: 95 x 145 x 65

Weight in kg: 0.8



1008090200

**IP Substation Kit**

- \* Optional conformal coating for use in harsh environments
- \* Remote software upgrade, configuration and monitoring
- \* Dual Ethernet ports for daisy chaining IP stations or connection of other IP devices, like an IP video camera
- \* Relay output for e.g. door lock control
- \* Tamper alarm input. Enables manufacturing of EN 81-28 and 81.70 compliant lift stations.

Size (WxHxD) in mm: 72 x 110 x 20

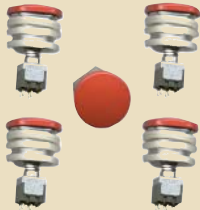
Weight: 100 g



1008091000

**Mounting and Assembly Kit for IP Substation**

The IP Substation Kit itself includes the PCB. An optional Mounting and Assembly Kit includes gaskets, two inch loudspeaker, loudspeaker housing and microphone with mounting block for call LED.



1008092000

**5 Buttons - Mushroom Type, Red**

Buttons are ordered separately in sets of 5 pcs. or purchased locally.

- Vandal proof 30 mm<sup>Ø</sup> mushroom type, mounting hole 22.5 mm<sup>Ø</sup>

1008092100

**5 Buttons - Stainless Steel**

Buttons are ordered separately in sets of 5 pcs. or purchased locally.

- Vandal proof 22 mm<sup>Ø</sup> stainless steel, mounting hole 19.2 mm<sup>Ø</sup>

## Master Stations



1007007000

### **Dual display station**

Desktop master station with full access to all features in the STENTOFON AlphaCom Exchanges. Delivered without the optional gooseneck microphone module.

Size (WxHxD) in mm: 72 x 140 x 270

Weight in kg: 0.4

1007007010

### **Microphone for Dual Display Station**

Gooseneck microphone module.



1007001210

### **Desk Master Station**

Slimline with handset and D-10 dialler, grey/black

Size (WxHxD) in mm: 112 x 132 x 260

Weight in kg: 0.64

Requires separately ordered station cable.



1007034210

### **Desk Master Station**

Desk or Wall with handset and D-10 dialler, grey/black

Size (WxHxD) in mm: 225 x 75 x 176

Weight in kg: 0.7

Requires separately ordered station cable.



1007036210

### **Desk/Wall Master Station**

Desk or Wall with D-10 dialler, grey/black

Size (WxHxD) in mm: 168 x 75 x 176

Weight in kg: 0.5

Requires separately ordered station cable.



1007001310

### **Desk Master Station, Display**

Slimline with handset and D-10 dialler and display, grey/black

Size (WxHxD) in mm: 112 x 132 x 260

Weight in kg: 0.6

Requires separately ordered station cable.



1007034310

### **Desk/Wall Master Station, Display**

Desk or wall with handset and D-10 dialler and display, grey/black

Size (WxHxD) in mm: 225 x 75 x 176

Weight in kg: 0.7

Requires separately ordered station cable.



1007036310

**Desk/Wall Master Station, Display**

Desk or wall with D-10 dialler and display, grey/black  
Size (WxHxD) in mm: 168 x 75 x 176  
Weight in kg: 0.5  
Requires separately ordered station cable.



1007070090

**Desk Master Station, Display**

Slimline with handset and D-10 dialler and display, grey/black  
Size (WxHxD) in mm: 112 x 132 x 260  
Weight in kg: 0.6  
Requires separately ordered station cable.



1007071090

**Desk/Wall Master Station, Display**

Desk or wall with D-10 dialler and display, grey/black  
Size (WxHxD) in mm: 168 x 75 x 176  
Weight in kg: 0.5  
Requires separately ordered station cable.



1007072090

**Desk/Wall Master Station, Display**

Desk or wall with handset and D-10 dialler and display, grey/black  
Size (WxHxD) in mm: 225 x 75 x 176  
Weight in kg: 0.7  
Requires separately ordered station cable.

**Sockets**

KB171

**Wall Socket, RJ45, Surface Mounted**

KB172

**Wall Socket, RJ45, Flush Mounted****Cable**

EPKAB98510

**3 meters Station Cable with RJ45 Connector**

EPKAB98515

**0.5 meters Station Cable with RJ45 Connector**

## Flush Mount Stations



1006036600

### OR Master Station

The 1006036600 is a flush mount master station and is designed for use in hospital operating rooms. Controls for speaker volume and microphone sensitivity are set internally. The totally flat surface of this station has a Mylar covering to allow easy wipe down and sterilization. Size (WxHxD) in mm: 125 x 280 x 66  
Weight in kg: 0.7  
Requires 1000602000 flush or 1000603000 surface back box.



1007036600

### OR Master Station with Display

The 1007036600 is a flush mount master station and is designed for use in hospital operating rooms. It features 4 programmable direct access keys and an LCD-display. Controls for speaker volume and microphone sensitivity are set internally. The totally flat surface of this station has a Mylar covering to allow easy wipe down and sterilization. Size (WxHxD) in mm: 125 x 280 x 66  
Weight in kg: 0.7  
Requires 1000602000 flush or 1000603000 surface back box.

**New**



1007040000

### Wall Master Station, Standard

Size (WxHxD) in mm: 125 x 280 x 53  
Weight in kg: 0.6  
Requires 1000602000 flush or 1000603000 surface back box.

**New**



1007042000

### Wall Master Station, Display

With display and with 8 DAK (direct access keys).  
Size (WxHxD) in mm: 125 x 280 x 53  
Weight in kg: 0.6  
Requires 1000602000 flush or 1000603000 surface back box.

**New**



1007043000

### Console Master Station

This master station is designed for flush fitting in a console and a back box is available for this purpose.  
Size (WxHxD) in mm: 125 x 280 x 53  
Weight in kg: 0.8



1007046000

### Wall Substation

With (1) doorbell button, weather resistant.  
Size (WxHxD) in mm: 125 x 280 x 53  
Weight in kg: 0.6  
Requires 1000602000 flush or 1000603000 surface back box.



1000602000

**Back Box - Flush**

For standard wall mount station, flush mounting.

Size (WxHxD) in mm: 120 x 260 x 62

Weight in kg: 0.6



1000603000

**Back Box - Surface**

For standard wall mount station, surface mounting.

Size (WxHxD) in mm: 138 x 280 x 65

Weight in kg: 1

1000602800

**Front Panel**

For back boxes above.

## Control Room Master Station and Accessories



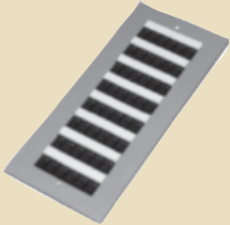
1007006101

### **Control Room Master IV**

Includes 4 x 20 character alphanumeric LCD display with backlight, 4 programmable singletouch keys (DAK) with 2 independent programmable LED's each, full dialling keypad, programmable buzzer, 1W speaker and gooseneck microphone. Station can be mounted in desktop housing or flush. Requires 12 V DC power supply.

Size (WxHxD) in mm: 125 x 280 x 25

Weight in kg: 0.75



1007006110

### **DAK-48 Unit**

48 single touch keys with 2 independent programmable LED's each.

Maximum 2 DAK-48 Units per CRM IV station.

Size (WxHxD) in mm: 125 x 280 x 30

Weight in kg: 0.3



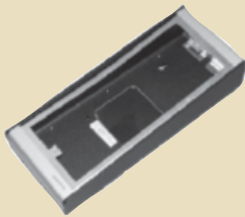
1007006190

### **Handset Unit**

with PTT-function.

Size (WxHxD) in mm: 125 x 280 x 30

Weight in kg: 0.45

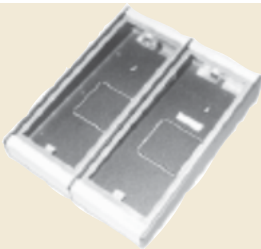


1007006180

### **Single Back Box**

Size (WxHxD) in mm: 135 x 320 x 75

Weight in kg: 1



1007006181

### **Double Back Box**

Size (WxHxD) in mm: 265 x 320 x 75

Weight in kg: 2



1007006182

### **Two Housing Mounting Kit**

For mounting of single+double or double+double desktop houses.

Weight in kg: 0.1



1007080000

### Light Industrial Master Station with Loudspeaker

Splashproof, grey bayblend plastic housing. Built-in speaker, Mic. & LED. 10W VOX-operated amplifier for ext. 8-20 Ohm loudspeaker

Size (WxHxD) in mm: 124 x 244 x 63

Weight in kg: 0.9



1007082000

### Noise Cancelling Industrial Master Station

Weatherproof. Noise cancelling Mic. & LED. 10W VOX-operated amplifier for ext. 8-20 Ohm loudspeaker.

Size (WxHxD) in mm: 160 x 240 x 137

Weight in kg: 1.1



1007086000

### Heavy Duty Industrial Master Station

Master station with free access to all extensions and features. 10W VOX-operated amplifier for ext. 8-20 Ohms loudspeaker.

Size (WxHxD) in mm: 160 x 260 x 100

Weight in kg: 1.1

Equipped with 4 direct access keys.

**Industrial Substations**


1007083000

### Heavy Duty Industrial Substation

Weatherproof. Noise cancelling microphone and built-in loudspeaker, 10W VOX-operated amplifier for external loudspeaker. Programmable call button, simplex and cancel buttons.

Size (WxHxD) in mm: 160 x 260 x 92

Weight in kg: 1.1



1007085000

### Heavy Duty Industrial Substation

Weatherproof. Noise cancelling microphone and built-in loudspeaker, 10W VOX-operated amplifier for external loudspeaker. Programmable call button.

Size (WxHxD) in mm: 160 x 260 x 92

Weight in kg: 1.1

## Accessories for Industrial Stations



VMP-211

**Handset for Industrial Stations**

Size incl. handset (WxHxD) in mm: 80 x 250 x 155

Weight in kg: 0.9



VMP-250

**Handset for Industrial Stations**

Size incl. handset (WxHxD) in mm: 98 x 242 x 153

Weight in kg: 0.9



VMP-36-PEL

**Headset with 10m Cable**

- Includes switchbox with ON/OFF and Talk push-button w/ belt clip.
- Standard with 10 meter cable.
- To be used in noisy areas.



VMP-36-PELP

**Portable headset with 10m Cable and Plug**

- Headset for connection to CD-7 Plug Box for VMP-36-PELP. Includes switchbox with ON/OFF and Talk push-button w/ belt clip.
- Standard with 10 meter cable and plug 4 pin Amphenol.
- To be used in noisy areas.



CD-7-VMP

**Plug box WT**

- Is a watertight plug box
- Is designed to be used together with PRO-36-PELP, portable headset
- Has socket with dustcap
- Has headset with ON/OFF button
- Is delivered for bulkhead mounting
- Is suitable for installation in noisy or deck areas.



HP-15

**Horn Loudspeaker, 8 ohm, 15W**

VML-1520

**Horn Loudspeaker, 20 ohm, 15W**

EOTRF10115

### 220V AC/12V AC Transformer for Industrial Stations with Power Amplifier



EHS-240

### Rotary light, 24V DC, Orange

Can be used in noisy areas to indicate a call.  
IP 54.



EHS-2200

### Rotary light, Mains 220-240V AC, Orange

Can be used in noisy areas to indicate a call.  
IP 54.

## Tamper and Vandal Resistant Stations and Accessories



1070601010

### Tamper Resistant Substation

with 1 button.

Size (WxHxD) in mm: 190 x 140 x 64

Weight in kg: 1.15

Requires 1000629700 flush or 1000629800 surface backbox.



1070601020

### Tamper Resistant Substation

with 2 buttons (to call second master or music selection).

Size (WxHxD) in mm: 190 x 140 x 64

Weight in kg: 1.15

Requires 1000629700 flush or 1000629800 surface backbox.



1000629700

### Back Box - Flush Mount

for tamper resistant substations above.

1000629800

### Back Box - Surface Mount

for tamper resistant substations above.



1007061000

### Tamper and Vandal Proof Station

with 1 button.

\* Intercom station designed for prison and correctional facilities.

\* Tamper and scream alarm, guard presence mode and several I/Os for adaptation to local needs.

\* Vandal proof design with 2.5 mm steel front, sensor button, microphone/speaker protection and water resistant.

\* Integrated light signalling system.

\* Redundant backup for power and signalling.

Size (WxHxD) in mm: 128 x 264 x 51

Weight in kg: 0.95



1007063000

### Tamper and Vandal Proof Station

with 5 buttons.

- Intercom station specially designed for prison and correctional facilities.
- Tamper and scream alarm, guard presence mode and several I/Os for adaptation to local needs.
- Bed light control and music distribution with volume control and channel indication.
- Vandal proof design with 2.5 mm steel front, sensor buttons, microphone/speaker protection and water resistant.
- Integrated light signalling system.
- Redundant backup for power and signalling.

Size (WxHxD) in mm: 128 x 264 x 51

Weight in kg: 0.95



1007060130

### Corridor Lamp

The unit has 2 LED lamp sections (red and green) to indicate the status of the related Tamper and Vandal Proof Station: Idle, Call, Alarm and Guard present.

Delivery: On request.



1007060120

### Remote Call Button

This is a tamper proof button which for example can be connected to the 1007061000 and 1007063000 stations as an additional call button in the toilet area.

Delivery: On request.



890070737601

### Back Box with Anchors, Flush Mount

for tamper and vandal proof stations.

Size (WxHxD) in mm: 256 x 124 x 60

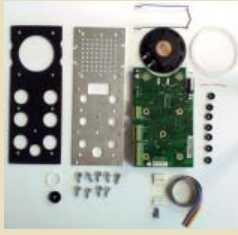


1007060150

### Back Box, Wall Mount

The 1007060150 consists of a wall mount back box and a bracket specifically designed to mount the 1007061000 and 1007063000 stations into this box.

Size (WxHxD) in mm: 130 x 265 x 67



1007060100

### Feature Station Kit Including Accessories

The kit includes the electronics board, speaker, microphone, gasket and a connector to build a station as the 1007061000 and 1007063000 but with a customised front plate. This board can provide the following features to a station based on it:

- Scream alarm
- I/O for control and status indication
- Tamper alarm
- Sensor keys

Size (WxHxD) in mm: 190 x 82 x 40




1007060105

### Features Station Kit

The kit includes the electronics board as used in the 1007061000 and 1007063000 stations. This board can provide the following features to a station based on it:

- Scream alarm
- I/O for control and status indication
- Tamper alarm

Size (WxHxD) in mm: 80 x 140 x 35

 10 x 

1007060110

### Set of Sensor Keys

These keys are intended to be used with kit 1007060100 to manufacture a similar station as the 1007061000 and 1007063000 but with a customised front plate.

There are 10 keys in a set.

Front plate key hole diameter in mm: 16

Depth in mm: 2.5

**New**

QHF1028

### Snake Eye Screwdriver (Driver#4)

**New**

QHF1029

### Bit for QHF1028 1/4"

**New**

1000132100

### Master station kit

for 1007040000-type station

**New**

1000142500

### Master station kit for display station

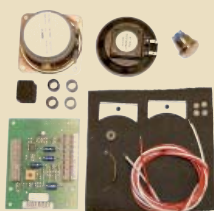
display not included. Master station kit for 1007042000-type station.

**New**

A100C01425

### Master station kit for display station

PCB only, display not included.



1007102000

### Substation Kit

This kit includes the 1307 substation board, 45 Ohm weather resistant loudspeaker, electret microphone with mounting material, one tamper-proof button and all other necessary station accessories.

## Exchanges

1009607000

### AlphaCom E7 Package - version 10

Complete system with Power Supply Board, Processor Board, and 2 Subscriber Boards.  
Documentation CD with complete AlphaCom documentation and AlphaPro programming tool.  
Size without brackets (WxHxD) in mm: 427 x 133 x 280  
Weight in kg: 7



**New**

1009607300

### AlphaCom E7 with License for 12 Stations

AlphaCom E7 Package - version 10  
Complete system with Power Supply Board, Processor Board, and 12 IP station licenses.  
Documentation CD with complete AlphaCom documentation and AlphaPro programming tool.  
Size without brackets (WxHxD) in mm: 427 x 133 x 280  
Weight in kg: 6



1009620000

### AlphaCom E20 for 19" Rack Mounting - AC - version 10

Complete system with AC Power Supply, Processor Board, Program Board, 2 Subscriber Board and 2 Subscriber Cables 100 9501 011 and AlphaCom documentation CD.  
Size (WxHxD) in mm: 482 x 265 x 365  
Weight in kg: 17



1009626000

### AlphaCom E26 for 19" Rack Mounting - AC - version 10

Complete system with AC Power Supply, AMC-IP Processor Board, Program Board, 2 Subscriber Boards and 2 Subscriber Cables 100 9501 011 and AlphaCom documentation CD.  
Size (WxHxD) in mm: 483 x 841 x 365  
Weight in kg: 39



1009626100

### AlphaCom E26 Floor Cabinet - version 10

This cabinet is supported with extra side and top panels but without a distribution field.  
Complete system with AC Power Supply, AMC-IP Processor Board, Program Board, 2 Subscriber Boards and 2 Subscriber cables 1009501011 and AlphaCom on documentation CD.  
Size (WxHxD) in mm: 483 x 841 x 513  
Weight in kg: 46



1009626200

### AlphaCom E26 Floor Cabinet with Distribution Field - AC - version 10

This cabinet is supported with extra side and top panels and a distribution field.  
Complete system with AC Power Supply, AMC-IP Processor Board, Program Board, 2 Subscriber Boards and 2 Subscriber cables 1009501011 and AlphaCom documentation CD.  
Size (WxHxD) in mm: 483 x 841 x 593  
Weight in kg: 54



1009641001

**IP Station License for 1 Station**

1009641xxx

**IP Station License for xxx Stations (001<=xxx<=552)**

1009641552

**IP Station License for 552 Stations**

IP stations require a license. They do not require additional hardware such as an ASLT card. The maximum number of stations which is supported by an exchange is 552. These can all be IP stations if the network to which they are configured support multicast. If this is not the case, the maximum number of supported IP stations in an exchange is 138.

## SIP Station Licenses

1009643001

**SIP Station License for 1 SIP Telephone**

10096430yy

**SIP Station License for yy SIP Telephones (01<=yy<=50)**

1009643050

**SIP Station License for 50 SIP Telephones**

Each telephone requires a SIP station license. SIP telephones can be physical units but also SIP softphone clients on a PC or PDA.

## AlphaNet and Multi-module VoIP Licences

1009640002

**AlphaNet and Multi-Module VoIP Licence for 2 Static Lines**

Multi-module requires licenses in each module, max 4 modules.

1009640108

**AlphaNet and Multi-Module VoIP Licence for 8 Dynamic Lines**

Upgrade from 2 lines

1009640008

**AlphaNet and Multi-Module VoIP Licence for 8 Dynamic Lines**

Multi-module requires licenses in each module, max 4 modules.

1009640016

**AlphaNet and Multi-Module VoIP Licence for 16 Dynamic Lines**

Multi-module requires licenses in each module, max 4 modules.

1009640030

**AlphaNet and Multi-Module VoIP Licence for 30 Dynamic Lines**

Multi-module requires licenses in each module, max 4 modules.

AlphaNet and multi-module linking for the AlphaCom E exchanges can be via data networks. This does not require additional hardware inside the exchange, but opening up the capability requires the correct licence. Licenses are required in all connected modules and nodes. There is no difference whether a license is used for an AlphaNet or a multi-module connection.

A static license means that the destination of an audio link needs to be defined at commissioning, a dynamic link is a common resource, and can be used for any audio link that requires connection. The data links between modules and nodes are not licensed.

**New**

## SIP Trunking VoIP Licences

**New**

1009642001  
**SIP Trunking, 1 Line**

1009642002  
**SIP Trunking, 2 Lines**

1009642004  
**SIP Trunking, 4 Lines**

**New**

1009642104  
**SIP Trunking, 4 Lines - upgrade from 2 Lines**

1009642008  
**SIP Trunking, 8 Lines**

1009642016  
**SIP Trunking, 16 Lines**

SIP trunking gives the possibility to connect an AlphaCom E to a telephone network, either directly to a SIP enabled telephone system or through a gateway to an analogue or ISDN (BRI or PRI) system.

## SIP Equipment

### Analogue FXO Gateways

Makes it possible for external analogue equipment and telephony services to connect to the STENTOFON Alphacom E Audio platform easily via a standard analogue FXO interface.

- Totally flexible positioning of the gateway – IP interface to the AlphaCom
- Caller-ID of incoming caller can be presented to callee
- Default simplex from sub-station through gateway gives high quality voice connection even in high noise environments
- DTMF signals are sent during connection (gives possibility for 'Open door' feature )
- Incoming calls get second dialing tone, and then station number can be dialled.

2200001000



### AudioCodes MP-114 Gateway

- Supports 4 analogue FXO lines
- Web management for easy configuration and installation.

2200001008

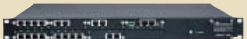


### AudioCodes MP-118 Gateway

- Supports 8 analogue FXO lines
- Web management for easy configuration and installation.

## Digital Gateway

**New**



2200001132

### AudioCodes Mediant 1000 with 1 E1/T1 port

AudioCodes Mediant 1000 gateway. Support for 1 E1 link

2200002000

### 19" Rack Mounting Kit for AudioCodes MP-11X GW

Allows mounting in standard 19" rack.

**New**

1009642902

**MP-114 Gateway bundled with 2 SIP trunk licenses****New**

1009642904

**MP-114 Gateway bundled with 4 SIP trunk licenses****New**

1009642908

**MP-118 Gateway bundled with 8 SIP trunk licenses****Upgrade Kits**

1009202000

**Processor Board, AMC-IP - version 10**

The AMC-IP card is the next generation multiservice processor card for the AlphaCom E series. As standard it is part of every AlphaCom E exchange package, but as it also supports all traditional AlphaCom feature cards. It can be used to upgrade already installed AlphaCom 80+ and 138 exchanges to become AlphaCom E20 and E26 exchanges.

The card is made for critical communications and security solutions and features an embedded Linux operating system, integrated media processing engine, packet processing engine, HW encryption and storage module.

Weight in kg: 0.5



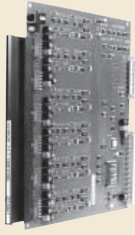
1009511000

**AMC - IP Filter Card**

This filter card is equipped with 2 ethernet and has 2 serial port connectors.

Weight in kg: 0.1

## Feature Cards



1009101010

**Subscriber Line Board, ASLT**

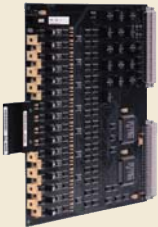
Each board provides 6 intercom subscriber connections.  
Weight in kg: 0.5



1009102000

**Subscriber Line Board, ATLB**

Each board provides 6 analogue telephone (DTMF) connections.  
Weight in kg: 0.5



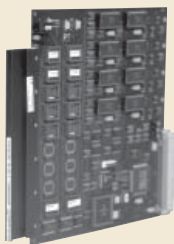
1009303001

**General Purpose Audio Interface, AGA**

The AGA card is a multi-purpose analogue audio card and can be used for different applications:

- Audio Program Inputs
- Multi-module Linking
- AlphaNet
- Audio-only Station
- Public Address

Weight in kg: 0.5



1009304005

**Stored Voice Playback Board, ASVP**

This board supports applications requiring pre-recorded audio messages. Time or date can easily be added to each message to act as an accurate information tool. A set of standard alarm messages such as 'Fire Alarm' and 'Theft Alarm' are available. Custom specified messages can be delivered.

Weight in kg: 0.5

1009304001

**Norwegian version**

1009304002

**Finnish version**

1009304003

**Danish version**

1009304004

**German version**

1009304006

**French version**

1009304011

**Swedish version**



2030010260

**Mains Transformer 6A**

This transformer can be used on AlphaCom M and AlphaCom E7 packages up to 24 lines.  
230-250V AC, 50-60Hz / 24V AC, 150VA. EN 61558-2-6  
Size (WxLxH) in mm: 92 x 130 x 87  
Weight in kg: 2.4



2030010270

**Mains Transformer 11A**

This transformer is recommended for AlphaCom M and AlphaCom E7 packages up to 36 lines.  
230-250V AC, 50-60Hz / 24V AC, 260VA. EN 61558-2-6.  
Size (WxHxD) in mm: 106 x 153 x 98  
Weight in kg: 4.2

1009703000

**Power Supply, APWR - AC version**

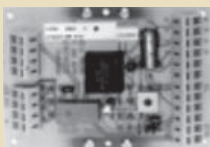
This unit is needed if the AlphaCom exchange has more than 102 subscribers or power redundancy is required and the exchange originally is equipped with an AC-power supply.



1009505000

**Filter Board and Speech Adapter with Relay, FBSAR**

This board holds two audio channels to act as a galvanic interface between the AlphaCom exchange and external PA- or non-selective radio Systems. One of the channels is equipped with relays and optocouplers for non-selective radio keying and control. Both channels hold electronics to filter the 40 kHz data carrier tone used in display stations, that might cause amplifier overheating on common PA Systems.  
Weight in kg: 0.1



1009960100

**Microphone Amplifier for Dynamic & Electret Mic., MADER**

With this board it is possible to have two way communication in conjunction with an external 8 to 40 Ohms loudspeaker. With this board it is also possible to make announcements by use of a common dynamic microphone. By use of an RCI and 1 pair of additional cable the microphone On/Off button can activate pre-programmed loudspeaker zones for announcements.  
Weight in kg: 0.1



1000614100

**Power Amplifier Board**

Amplifier giving 6W into 20 ohm and 20W into 4 ohm.  
Weight in kg: 0.2



1009970200

**Relay Board, MRBD**

Board with 6 relays for external control. The board is controlled by the AlphaCom software and can be mounted in the AlphaCom exchange or in connection to the RIO-unit.  
Weight in kg: 0.1



1009970500

### Remote Input / Output Controller, RIO

For connection of technical alarm inputs and distribution of remote control outputs within an AlphaCom system. Distributed I/O device with built in 8 remote control inputs and logic for 18 remote control outputs per unit. Up to 140 alarm inputs within the same AlphaCom exchange. Up to 30 RIO's can be connected to an exchange thereby controlling up to 500 RCO's.

Size in mm: 125 x 225 x 50

Weight in kg: 0.55



1009970101

### Power Distribution Board

This Board is used when it is necessary to supply external equipment such as FBSAR with power from the AlphaCom exchange. The power distribution board applies to the AlphaCom E20, E26, 80+ and 138 only, not the AlphaCom E7 and AlphaCom M.

Weight in kg: 0.1

1009990200

### Anti-static Wrist Strap



1009971000

### InterGuard 60W Amplifier 100V Line

For background music, voice based alarm and announcements.

The InterGuard 60 is equipped with a Volume Override function. By use of two volume controls it is possible to preset two different volumes for the amplifier output. The Override volume is activated by an external input on the amplifier. The InterGuard 60 is also equipped with an AUX input making it possible to connect a local program source in addition to the AlphaCom input. If both are in use at the same time, the audio signal from the AlphaCom has priority and the local program will be muted. The InterGuard 60 amplifier is equipped with fault monitoring of lines, power and amplifier. Fault reporting is via the AlphaCom exchange. The amplifier connects to the AlphaCom via the a,b,c,d-wires. Connection to the AlphaCom with Volume Override control from the AlphaCom, is via the a,b,c,d plus one additional pair.

Size (WxHxD) in mm: 3,5 x 12 x 120

Weight in kg: 1.2

**New**


VPA-120

**19" Power Amplifier 120W**

- \* Booster unit designed for mounting in 19" rack system
- \* Two microphone inputs
- \* Outputs: 100V and Low impedance for monitoring
- \* Input by XLR sockets, output connection by using screw terminals.
- \* Priority with chime function
- \* Bass and treble controls.
- \* Overload, fault indication and amplifier monitoring
- \* 24 VDC/800 mA power is available on the back panel to feed external equipment.
- \* Equipped with fan for forced ventilation of the final power stages
- \* Dimension: 482W X 133H X 420D 19" rack mounting
- \* Weight: 18.2 Kg

**New**


VPA-240

**19" POWER Amplifier 240W**

- \* Booster unit designed for mounting in 19" rack system
- \* Two microphone inputs
- \* Outputs: 100V and Low impedance for monitoring
- \* Input by XLR sockets, output connection by using screw terminals.
- \* Priority with chime function
- \* Bass and treble controls.
- \* Overload, fault indication and amplifier monitoring
- \* 24 VDC/800 mA power is available on the back panel to feed external equipment.
- \* Equipped with fan for forced ventilation of the final power stages
- \* Dimension: 482W X 133H X 420D 19" rack mounting
- \* Weight: 21.2 Kg

**New**


VPA-400

**19" Power Amplifier 400W**

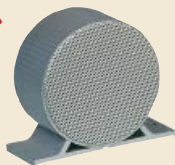
- \* Booster unit designed for mounting in 19" rack system
- \* Two microphone inputs
- \* Outputs: 100V and Low impedance for monitoring
- \* Input by XLR sockets, output connection by using screw terminals.
- \* Priority with chime function
- \* Bass and treble controls.
- \* Overload, fault indication and amplifier monitoring
- \* 24 VDC/800 mA power is available on the back panel to feed external equipment.
- \* Equipped with fan for forced ventilation of the final power stages
- \* Dimension: 482W X 133H X 420D 19" rack mounting
- \* Weight in kg: 24.2

**New**


BF-560T

**Loudspeaker, Flush Mounted, 6W, 100V Line**

Ceiling loudspeaker.  
 Diameter in mm: 165  
 Depth in mm: 107  
 Weight in kg: 1.2

**New**


CAR-4T

**Loudspeaker, Wall mounted, 4W, 100V Line**

Double faced loudspeaker.  
 Diameter in mm: 152  
 Depth in mm: 90  
 Weight in kg: 1.5

**New**


VML-15T

**Horn Speaker, 15W, WT**

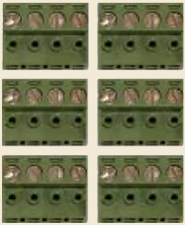
General purpose 15W horn loudspeaker. To be used together with 100V line amplifier, with 2.8m cable.  
 Dimensions (WxHxD) in mm: 250x145x298  
 Weight in kg: 1.35.

## Connection Material

### Installation Cable Type & Distance for ASLT and ATLB

Wire diameter	Max. distance ASLT	Max. distance ATLB
0.5 mm 24 AWG	1.4 km 5,000 feet	6 km 20,000 feet
0.6 mm 22 AWG	2.0 km 7,000 feet	8 km 26,000 feet
0.8 mm 20 AWG	3.4 km 11,000 feet	10 km 33,000 feet
0.9 mm 18 AWG	4.0 km 13,000 feet	10 km 33,000 feet

## Connection Material Used in AlphaCom M and AlphaCom E7



1009501100

### Connection Kit ASLT / AGA / AE1 / ATLB

This kit contains the necessary hardware for connection of the installation cable to the back plane of the AlphaCom M and AlphaCom E7 exchange.

## Connection Material used in AlphaCom E20, E26, 80+ and 138

Note: Also used for AGA board when the AGA board is used in AlphaNet or 'AGA stations'



1009501011

### 1.5m Flat ASLT Connection Cable with Filter Board

Complete with plug for Subscriber Connection Board. This cable is normally used when the exchange is delivered with a distribution field.



1009501014

### 3m Flat ASLT Connection Cable with Filter Board

Complete with plug for Subscriber Connection Board. This cable is normally used when the exchange is delivered with a distribution field.

**New**



1009501021

### 5m Round ASLT Connection Cable with Filter Board

This cable is normally used when the distribution field is placed away from the exchange. The free end of the cable is unterminated.

1009501023

### 10m Round ASLT Connection Cable with Filter Board

This cable is normally used when the distribution field is placed away from the exchange.

**New**



1009501041

### Filtercard with 6xRJ45 Connectors



1009930200

### Connection Board for ASLT, Krone Terminals

Fits on distribution field or main distribution frame (MDF).



1009501031

### 1.5 m Flat ATLB Connection Cable with Filter Board

Complete with plug for Subscriber Connection Board. This cable is normally used when the exchange is delivered with a distribution field.



1009501034

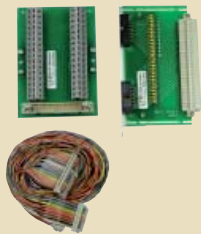
### 3m Flat ATLB Connection Cable With Filter Board



1009930202

### ATLB Connection Board, Krone Terminals

Fits on distribution field or main distribution frame (MDF).



1009930300

### Installation Set, Program Connection

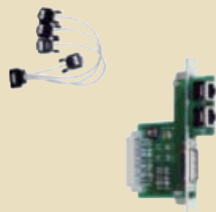
Makes it possible to connect 16 program sources to the AGA board.



1009930303

### Installation Set, Multi-Module Audio Connection

Use this set for connection when two or more AlphaCom exchanges shall be locally expanded (max. 1 m distance between exchanges).



1009509000

### Installation Set for AE1



1009503000

### APC Connection Kit

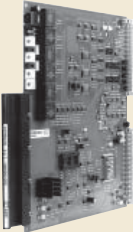
Consisting of APC filter card and APC connection board. This kit is required to access the 6 RCI and 6 audio program inputs of the APC.

**Spares**


1009201000

**Processor Board, AMC - version 9**

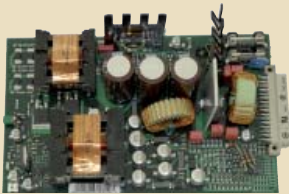
This board contains software and hardware controlling the AlphaCom system.  
Weight in kg: 0.5



1009301000

**Program & Clock Board, APC**

This board controls the back plane board clocking. It also controls the speed of the fans. It contains circuitry for 6 audio program feed channels with galvanic isolation.  
Weight in kg: 0.5



A100C07814

**PSU for the AlphaCom M and AlphaCom E7**


1009305000

**AE1 Digital Network Card**

The AE1 card provides digital networking using E1/T1 lines. The card can be used for AlphaNet or multimodular linking. The board provides fractional E1/T1 multiplexing capabilities.  
Weight in kg: 0.5


**Public Network Interface, PNCI**

Unit for incoming and outgoing calls between intercom stations and public/private telephone network, or to provide dialup tie-line between two intercom exchanges.

Size (WxHxD) in mm: 243 x 235 x 30

Weight in kg: 2.1

1009400100

**PNCI UNIT Norway (General version)**

1009400110

**PNCI-UNIT Sweden**

1009400120

**PNCI-UNIT Finland**

1009400130

**PNCI-UNIT Denmark**

1009400140

**PNCI-UNIT Germany**

1009400210

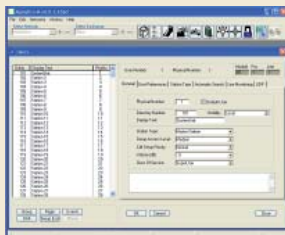
**PNCI-UNIT Switzerland**

1009400240

**PNCI-UNIT Austria**

1009930140

**PNCI Cable Set for AlphaCom**



### AlphaPro

AlphaPro is the tool for the configuration of the AlphaCom E system. It is self contained, simple to install and use. When a new exchange shall be configured, the exchange is given a working default factory setting.

The operator can then modify the settings such as:

- Directory (type of station, line interface, display name and more)
- Define groups (cell groups, guard groups)
- Interface to CCTV, PA, paging, DECT
- AlphaNet
- And other custom behaviour.

There are currently over 100 defined features which can be programmed with AlphaPro.

AlphaPro is an off-line tool. This means that it is possible to enter all parameters without the necessity of being connected to the exchange. Once all parameter are entered, AlphaPro can be connected to the exchange and the parameters can be sent. AlphaPro can also upload configuration information from an exchange. AlphaPro connects to an exchange via the IP network or a local RS232 interface.

AlphaPro E versions:

The AlphaPro comes in three versions. A hardware dongle is used to differentiate between the different versions. There are two types of hardware key, a parallel port key and an USB port key.

The versions of AlphaPro are:

#### AlphaPro E7

AlphaPro E7 runs without a hardware key. It gives access to all features except AlphaNet, but only for 36 subscribers.

1009293100

#### AlphaPro Lite

With parallel port dongle.



1009293120

#### AlphaPro Lite

With USB dongle.

AlphaPro Lite uses the Lite hardware key. It gives access to a limited range of features for all subscribers and is intended for customer maintenance of systems.

100 9291100

#### AlphaPro Professional

With parallel port dongle.

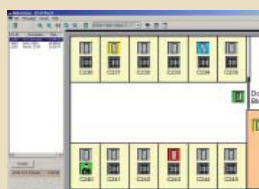


100 9291120

#### AlphaPro Professional

With USB dongle.

AlphaPro Professional uses the Professional hardware key. It gives access to all features for all stations. This version must be used when you want to make extensive changes to the Autoload.

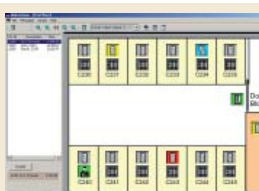


1009294100

#### AlphaVision

With parallel port dongle

Control handler software for all AlphaCom E exchanges. AlphaVision gives information to an operator about events inside the exchange, such as call requests and allows the operator to respond to such events. The screen is divided into a number of functional areas such as a Call request list, Map area, and others. Icons associate with intercoms, remote inputs and remote outputs can be placed in the maps. The behaviour of AlphaVision can be extended and changed via a built-in scripting language.



1009294120

#### AlphaVision

With USB dongle

# Pro700: Your hidden business asset

Would your company benefit from quicker communication between your employees?  
Are there areas in your business where it is hard to locate people?

Would you like to improve your customer service – resolve customer queries more quickly, lessen customer delays and increase your throughput?

Would you like to reduce crime levels in your company? And would your public facing staff benefit from a discreet, silent alarm button linked to your own security?

Many quandaries but just one solution: the affordable Pro700.

## Offices

**Pro700** offers the simplicity and convenience of rapid hands-free communication in the work situation, both at offices and at loading bays. At the same time, it provides announcements and background music as a PA system. Add the security option of controlling/opening the front and back entrances and an emergency station in the elevator, and it becomes an investment which is hard to beat.

## Shops

**Pro700** is the easy-to-use security and communication system for the small shop. During late hours, the cashier can call colleagues for backup with the single touch of a hidden key. Food stores, convenience stores, clothes stores, they all share the need to cover, efficiently, announcements, price requests and respond to delivery and customer calls whether these be at the front of house or at the delivery area.

## Industry

**Pro700** also allows efficient communication in difficult to reach places and where dirt, dust, or noise makes standard communication impractical. With fast access to colleagues, a large station range and easy-to-use features, Pro700 is the preferred solution for small industries or production cells in larger plants.

## Door entry/elevator system

**Pro700** offers communication and remote opening of front and back entrances – or multiple doors if necessary. Ideally suited for multiple entrances/multiple elevator facilities, Pro700 is particularly ideal when there are staffing changes throughout the day.

## Medical

**Pro700** offers a new station incorporating the latest micro ban or anti-bacterial technology, suitable for clean areas. Easy to install and easy to use (hands free), Pro700 is suitable for a multitude of environments in the healthcare sector – from the surgery to psychiatric homes to private hospitals.

## Gas stations

**Pro700** is the easy-to-use security and communication system for the gas station. During late hours, the cashier can talk to customers at the pump without leaving the till unattended – superior service and superior security in one system. The rugged station range is ideal for the tough and diverse environment offering both weatherproof, tamper proof and industrial grade stations.

## Holding areas, prisons and treatment facilities

With rugged stainless steel stations and sophisticated surveillance features, **Pro700** is ideal for small jails or similar environments where a small number of mobile staff must cope with a varying number of inmates. Each cell can be equipped with a local call indication lamp/response button for time-saving responses by the guard in the corridor. With optional sound detection, **Pro700** is also ideally suited for treatment facilities or detox centres, where it is necessary to communicate with and monitor clients for their own protection.




**AA711**
**Desk/Wall Master Station with Display**

Although only the size and weight of a conventional telephone handset, the AA711 combines all essential functions needed for effective internal communication: loudspeaking handsfree, softspeaking confidential, and total privacy. In addition the station supports external call and silent alarm buttons, suitable for security applications and is also equipped with a built-in relay for control of camera, external call warning lamps, etc. The cabinet of the AA711 station is cast in high-grade, impact-resistant ABS plastic with a satin finish. The AA711 station is designed for desk use or wall-mounting, using a handy wall-bracket GF732.

Colour: Grey

Size (WxHxD) in mm: 68 x 225 x 45

Weight in kg: 0.3


**AA702**
**Wall Master Station with Display**

The AA702 has the same basic features as the desk/wall master station AA711. The surface mounted station can easily be converted to a flush mounted model by use of a clip-on front plate BF636. The housing is high-grade, impact resistant ABS.

Colour: Grey

Size (WxHxD) in mm: 80 x 220 x 51

Weight in kg: 0.4


**AA703**
**Industrial Master Station**

The AA703 is a surface mounted station, a splashproof model designed for humid, dirty and outdoor conditions. It has a flame retardant and chip-resistant casing of durable Bayblend plastic. The front can be removed to allow easy access during installation and service. The station has an internal 3 Watt amplifier and the speaker volume is adjustable with switches located inside the station, four levels. In addition to the built-in loudspeaker, the unit is prepared for connection of an external speaker. As an optional feature, the 10W power amplifier FC740 may be used with this speaker. The FC740 also allows you to use the loudspeaker both as loudspeaker and microphone if required (talk-back). The AA703 offers a remote control output via a built-in relay, which can be used to drive external call indicators (lamp/buzzer) or for general remote control facility activated by the calling subscriber.

Colour: Grey

Size (WxHxD) in mm: 124 x 244 x 63

Weight in kg: 0.8

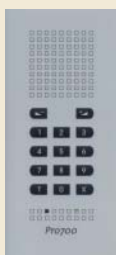

**AA704**
**Console Master Station**

The AA704 station is designed for console mounting or wall mounting using back box 6030 for surface mounting. The keyboard folio of UV-cured PVC is resistant to numerous fluids and chemicals. The keyboard is equipped with backlight and the light intensity can be adjusted with a variable resistor accessible at the front. The station is ideally suited as control desk station in correctional institutions, prisons, police stations, marine environment etc. The station has an internal 3 Watt amplifier and the speaker volume is adjustable with switches located inside the station, four levels. An external 10 Watt power amplifier unit FC740 can easily be connected where additional output volume is needed. The AA704 offers a remote control output via a built-in relay, which can be used to drive external call indicators (lamp/buzzer) or for general remote control facility activated by the calling subscriber.

Colour: Dark grey

Size (WxHxD) in mm: 125 x 280 x 50

Weight in kg: 0.5


**AA706**
**Clean Room Station**

The Clean Room Station type AA706 is designed for hospital operating theatres, patient solitary confinements and other clean rooms. The station front foil is made with Microban technology which provides dependable and constant protection against bacterial contamination. When bacteria come into contact with the foil, the antimicrobial function disrupts the bacterial cell wall killing or inhibiting bacterial growth. Further more, the station foil is resistant to chemicals and cleaners, and has an excellent scratch resistance. When flush mounted in the wall and sealed along the rim, there is no risk of fluid penetration into the station. The station has a full digit keyboard and has access to all features offered by the Pro700 intercom system. The station includes a sensitive microphone and a loudspeaker with 3W amplifier. The line and station status is indicated by a tri-color LED.

Colour: Light grey

Size (WxHxD) in mm: 125 x 280 x 50

Weight in kg: 0.9



AA705

### Heavy Industrial Master Station

The Heavy Industrial Master Station is a splashproof model designed for humid, dirty and outdoor conditions and areas where extreme noise occurs. The station is equipped with a noise cancelling microphone. The station consists of an orange makrolon plastic housing and a folio keyboard. The station has an internal 3 Watt amplifier and the speaker volume is adjusted with switches located inside the station, four levels. The unit requires connection of an external loudspeaker. As an optional feature, the 10W power amplifier FC740 may be used with this speaker. The FC740 also allows you to use the loudspeaker both as loudspeaker and microphone if required (talk-back). The AA705 offers a remote control output via a built-in relay, which can be used to drive external call indicators (lamp/buzzer) or for general remote control facility activated by the calling subscriber.

Colour: Orange

Size (WxHxD) in mm: 160 x 240 x 137

Weight in kg: 1

## Substations



AB708

### Wall Substation with Doorbell Function or 1 Direct Dial Button

The AB708 station is similar to the Wall Master Station AA702, but without display and keypad. It is designed for indoor conditions and is suitable as a door station. The station is equipped with a call button activating the door bell function to all stations belonging to this feature. Stations receiving the distinctive door bell chime pattern can reply to the door call by dialling 5. A normal two way connection is then established. Re-programming the station allows dialling to subscriber no. 13 only. The surface mounted station can easily be converted to a flush mounted model by using the clip-on front plate BF 636.

Colour: Grey

Size (WxHxD) in mm: 80 x 220 x 51

Weight in kg: 0.4



AB709

### Wall Substation with 3 Direct Dial Buttons

The AB709 station is similar to the Wall Master Station AA702, but without display and full keypad. It is designed for indoor conditions and is suitable as a door station. The keypad has 3 dial buttons which are preprogrammed to call station numbers 11, 12 and 13. When these buttons are used in combination with the X-button (X + call button), calls can be made to subscriber no. 21 (X+11), Programme Distribution Channel (X+12) or subscriber no. 23 (X+13). The station is also equipped with a cancel button.

Colour: Grey

Size (WxHxD) in mm: 80 x 220 x 51

Weight in kg: 0.4

## Tamper Resistant Stations



AB731/AB731-F

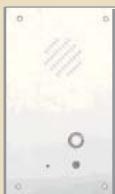
### Tamper Resistant Station with 1 Call Button, Surface Tamper Resistant Station with 1 Call Button, Flush

These stations are compact, dust resistant units with a very robust construction. The stations are made in stainless steel with a 2.0 mm thick front-plate. The construction ensures optimal protection of the push-button, microphone and loudspeaker. The stations are ideally suited for applications in correctional institutions, prisons, police stations, car parks, subway stations etc. The stations are equipped with a built-in relay. The stations have an internal loudspeaker with a 3 Watt amplifier. An external speaker can easily be connected. The stations are equipped with a call button for establishing connection with extension number 13. The same call button may optionally be used for 'door bell' function or the CAS function.

AB731: Tamper Resistant Station with 1 Call Button, Surface

Size (WxHxD) in mm: 90 x 180 x 65

Weight in kg: 1.5



AB731-F: Tamper Resistant Station with 1 Call Button, Flush

It comes with a light back box for EMC protection. When an optional backbox is needed for concrete mounting, the unit BF934 must be ordered.

Size (WxHxD) in mm: 130 x 220 x 60

Weight in kg: 0.9



AB731A/AB731A-F

### Door Station with 1 Call Button, Surface Door Station with 1 Call Button, Flush

These door/vandal proof stations are compact, dust resistant with a very robust construction. The stations are made in stainless steel with a 1.5 mm thick front-plate. The construction ensures optimal protection of the push-button, microphone and loudspeaker. The stations are ideally suited for applications in corridors, outdoor car parks, subway stations etc. The stations are equipped with a built-in relay. The station has an internal loudspeaker with a 3 Watt amplifier. An external speaker can easily be connected. The stations are equipped with a call button for establishing connection with extension number 13. The same call button may optionally be used for door bell function or the CAS function.

AB731A: Door Station with 1 Call Button, Surface

Size (WxHxD) in mm: 90 x 180 x 65

Weight in kg: 1.5

AB731A-F: Door Station with 1 Call Button, Flush

The AB731A-F is for flush mounting and comes with a light backbox for EMC protection. When an optional backbox is needed for concrete mounting, the unit BF934 must be ordered.

Size (WxHxD) in mm: 130 x 220 x 60

Weight in kg: 0.9



BC735

### Multipurpose Unit

This is a multipurpose unit in a splashproof housing designed for humid, dirty and outdoor conditions. It consists of a flame and chip resistant casing of durable Bayblend plastic. The front can be removed to allow easy access during installation and service. The unit has neither loudspeaker nor microphone. Two external speakers must be added, alternatively, a separate dynamic microphone may be connected. The station has an internal 3 Watt amplifier and the speaker volume is adjustable with switches located inside the station, four levels. An external 10W power amplifier unit FC740 can easily be connected, where additional output volume is needed. This also allows you to use the loudspeaker both as loudspeaker and microphone if required, (talk-back). The BC735 unit has a built-in relay which functions as a remote control device or an additional warning signal output.

Colour: Grey

Size (WxHxD) in mm: 124 x 244 x 63

Weight in kg: 0.8

#### Note:

AA705, AA703, BC735 external speaker impedance, minimum 20 ohms without FC740.

With FC740, minimum 4 ohms.

## Accessories



BF640

### Cable, 2m, 8 wires, RJ45-RJ45

BF641

### Cable, 6m, 8 wires, RJ45-RJ45

BF642

### Cable, 2m spiral, 8 wires, RJ45-RJ45

QHF1028

### Snake eye tool for AB731/731A

QHF1029

### Bit for QHF1028 1/4"

## WALL BRACKETS/FRONT PLATES/BACK BOXES



GF732

### Wall Bracket

For AA711, grey

BF636

### Front Plate for Flush Stations

For AA702/AB708/AB709

Size (WxHxD) in mm: 140 x 280 x 4.5

BF934

### Backbox for Stations

For AB731-F and AB731A-F, Flush

Size (WxHxD) in mm: 134 x 204 x 60

BF635

### Backbox for Stations

For AA702, AB708, AB709, Flush

Size (WxHxD) in mm: 112 x 266 x 60

1000603000

### Surface Backbox

For AA704 and AA706

## INSTALLATION PARTS



KB171

### Wall Socket, RJ45, Surface Mounted

KB172

### Wall Socket, RJ45, Flush Mounted



PRO-36-PEL

### Headset with 10m Cable

- Includes switchbox with ON/OFF and Talk push-button w/ belt clip.
- Standard with 10 meter cable.
- To be used in noisy areas.

Works with the following Pro700 stations: AA703/AA704/AA705/BC735



PRO-36-PELP

### Portable headset with 10m Cable and Plug

- Headset for connection to CD-7 Plug Box for PRO-36-PELP. Includes switchbox with ON/OFF and Talk push-button w/ belt clip.
- Standard with 10 meter cable and plug 4 pin Amphenol.
- To be used in noisy areas.

Works with the following Pro700 stations: AA703/AA704/AA705/BC735



CD-7-VMP

### Plug Box Water tight

- Is a watertight plug box designed to be used together with PRO-36-PELP, portable headset
- Socket with dustcap
- Headset with ON/OFF button
- Delivered for bulkhead mounting
- Suitable for installation in noisy or deck areas



PRO221

### Handset, Flush Mounted (Marine)

The handset unit PRO221 is designed to be used together with main station AA704 for flush mounting in consoles. The built-in loudspeaker in AA704 is disconnected when lifting the handset for private conversation.



PRO211

### Handset, Wall Mounted (Marine)

The handset unit PRO211 is designed to be used together with main station AA703 and made for wall mounting. The built-in loudspeaker in AA703 is disconnected when lifting the handset.



GD745

### Handset Module, Surface

For stations A703/AA704/AA705, BC735.

## Station Kit



BD702

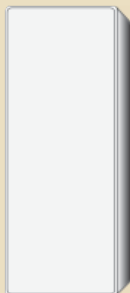
### Substation Kit

Based on PCB for station AB731

Contents of station kit BD702:

- Built-in relay
- Internal 3W amplifier
- Speaker and speaker housing.

## Interface Units



GH750

### Multipurpose Relay Unit, (e.g. camera switch)

HD752

### Autodialler for P.A., Radio Networks, Audio Interface, etc.

HD754

### Telephone Interface

FC740

### 10W Amplifier

For stations AA703/AA704/AA705/BC735

DP996

### Sound Detection Module

10W Amplifier module for stations AA703/AA704/AA705/BC735

## Power Supplies



LA617  
**Power Unit**  
220V/18V DC, 1 AMP, for max. 5 stations.



LA618  
**Power Unit**  
220V/18V DC, 4 AMP, for max. 20 stations.



LA925  
**Power Unit**  
220V/27V DC, 5 AMP, for max. 25 stations.

**The following items will not be produced anymore. They are all available until stock is diminished:**

AA701  
**Desk/Wall master.**  
Replaced by AA711.

AB707  
**Desk / Wall substation**  
With 3 call buttons.

GF632  
**Wall bracket**  
For AA701, AB707

# Bi-Way: Security Window Communication System

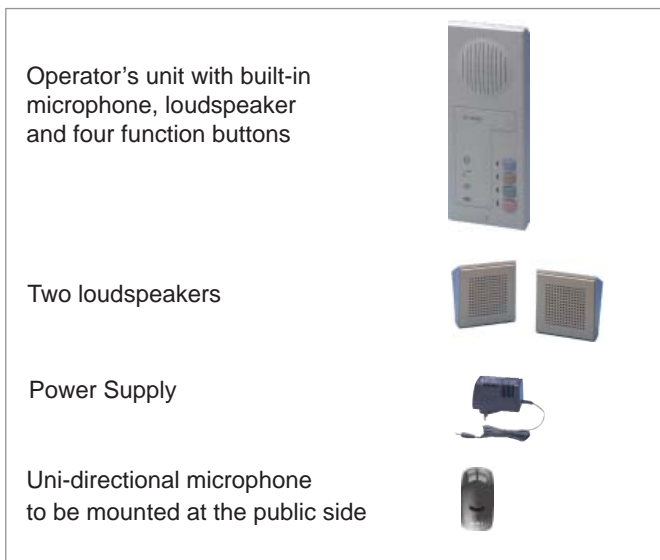
The **Bi-Way** system solves the communication problem between people on both sides of security glass partitions. The built-in duplex controller switches the speech direction to permit natural two-way conversation in varying noise levels, on either side of the counter, without push buttons.

## System Description

The **Bi-Way** system provides a safe, hygienic, efficient and comfortable working environment for counter personnel and makes normal conversation and personal service possible, while maintaining security.

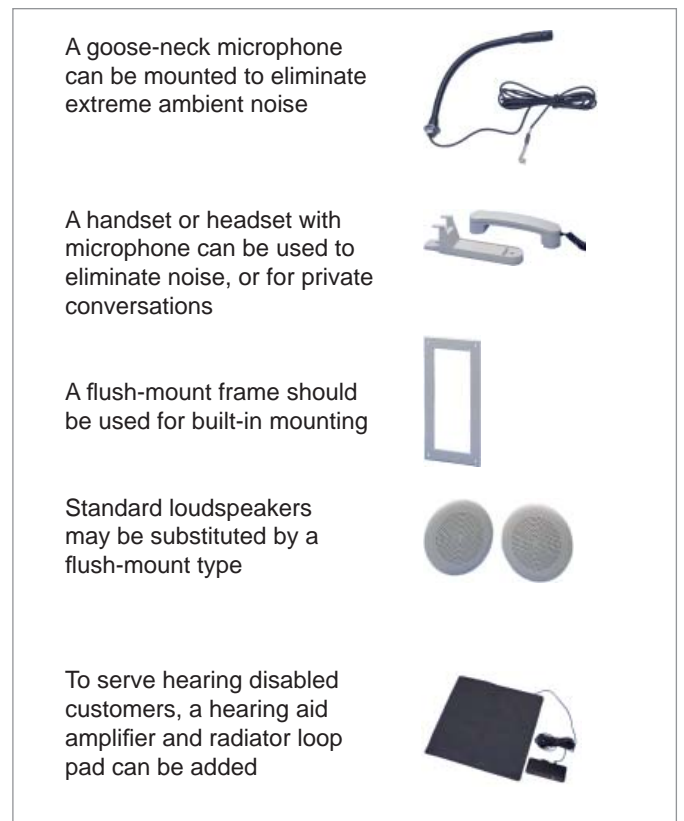
**Bi-Way** two-way conversation is suitable for communicating with your callers, visitors, interviewees or customers, and avoids the need for your employees and yourself to be put at risk. The system is renowned for its excellent sound quality.

## Bi-Way starter pack



The installation is easy and flexible – the operator's unit can be freestanding, wall or flush-mounted. The loudspeakers can be mounted to the glass, wall or desk on both sides of the public stand and the microphone is fixed to the glass by self-adhesive tape.

## Accessories



## Operation

In day to day use, the Bi-Way operator's unit is switched on, the sound is adjusted to a convenient level and the counter attendant is ready for the first customer. In addition to the on/off switch, you can set the unit to 'stand-by' mode – this will minimize the ambient noise from the public side in waiting periods. To increase the sound at the public side, a 'Push-to-talk' button will compensate for ambient noise, to attract attention or to serve people with reduced hearing. If a goose-neck microphone is mounted, you can toggle between this and the built-in microphone.

## Bi-Way Starter Kit



LBB 7026/65

### Bi-Way Starter Kit

This kit consists of an LBB 7026/60 Operator's unit, the LBB 7026/73 External microphone, the LBB 7026/80 Loudspeaker kit and the LBB 7102/60 Power supply. The Operator's unit includes a microphone select button for switching to an optional microphone, stand-by button to set the system in reduced volume listening mode, push-to-talk button and an ON/OFF button.



LBB 7026/60

### Bi-Way Operator's Unit

This unit contains all the electronics for one counter position including microphone and loudspeaker. The unit is designed for desk or flush mounting.

Size (WXHxD) in mm: 93 x 65 x 224 mm

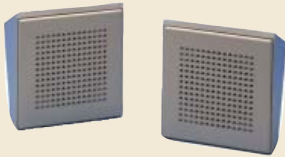
Weight in kg: 0.3



LBB 7026/73

### Bi-Way External Microphone

Uni-directional and noise cancelling microphone for connection to the operator's unit to improve flexibility.



LBB 7026/80

### Bi-Way Loudspeaker Kit

2 loudspeaker cabinets with self-adhesive tape and 10 m flexible loudspeaker cable. Includes alco-pad for screen cleaning.

Size (WXHxD) in mm: 105 x 106 x 72

Weight in kg: 0.2



LBB 7102/60

### Power Supply 12V/8W

230V AC, +6/-10%. 50/60 Hz. Double insulated and thermal fused.

Size (WXHxD) in mm: 100 x 51 x 63

Weight in kg: 0.5



LBB 7026/71

### Bi-Way Gooseneck Microphone for Operator Console

Optional directional microphone for extreme noise conditions.

Frequency range: 100 - 10.000 Hz, impedance 1000 ohms.

Size (LxD) in mm: 320 x 12

Weight in kg: 0.1



LBB 7026/81

### Bi-Way Flush-Mount Loudspeaker Kit

Optional 6 W loudspeakers for flush-mount applications in desk or wall.

Impedance: 20 ohms.

Size (Diam.xD) in mm: 160 x 58

Weight in kg: 0.7



LBB 7026/83

**Bi-Way Headset**

Headset with microphone for connecting to the Bi-Way operator's unit.  
Picture for illustration only. Supplied headset may have a slight different design.



LBB 7073/82

**Handset with Cradle Kit**

Optional handset for wall mounting in difficult noisy conditions or for situations where confidentiality is required.



LBB 7073/70

**Flush-Mount Frame to Operator's Unit**

Flush-mount frame for operator's unit. Desk or wall mounting.  
Size (WxHxD) in mm: 130 x 265 x 18  
Cut-out hole (WxHxD) in mm: 107 x 231 x 63



LBB 7073/61

**Flush-Mount Back Box - 60 mm**

For flush mounting of the Bi-Way operator's unit. Station cord and termination included.  
The Bi-Way operator's unit needs a flush mount frame.  
Size (WxHxD) in mm: 120 x 254 x 60  
Cut-out hole (WxHxD) in mm: 108 x 234 x 60



LBB 7073/84

**Cradle Bracket**

For table-top use of the Bi-Way operator's unit.



LBB 7026/82

**Bi-Way Hearing Aid Kit**

Hearing aid loop antenna and amplifier.  
To be used with 230 V/12 V AC, 8 W power supply.

## Power Supplies



LBB 7102/63

**PSU, Hearing Aid Unit, 12 V AC**

230 V/12 V AC. 8W power supply with Euro-connector.



LBB 7102/64

**PSU, Hearing Aid Unit, 12V AC**

240 V/12 V AC. 8W power supply with UK-connector.

## Three inventive Norwegian companies have merged into a global market player for internal communication systems

Shortly after World War II, and independently of each other, three enterprising Norwegians started the development, production and marketing of internal communication systems. Gustav A. Ring (Ring-Master), Otto S. Knudsen (STENTOFON) and Max Manus (M100) put all their resources into the production of simple communication systems that soon caused a sensation in the intercom world. Tough competition between them inspired each to continuously develop new systems, features and solutions for an ever-increasing number of market segments and applications. In 1997 Ring-Master and STENTOFON merged to become Stento ASA. The M100 system produced and marketed by Philips was acquired in 1999. This combined the three strongest and most established Norwegian companies in the field of internal communication. More recently, Stento ASA merged with SAIT Radio Holland in May 2000, then, in December 2001, the company changed its name to Zenitel. The company today is reinforcing the strong STENTOFON brand name within the group.

## From life-saving operations at sea to security and communication in a world perspective

In 1946 a man by the name of Otto S. Knudsen began producing life saving marine radios in Trondheim, Norway, leading to the production of radio sets, car radios and eventually intercom systems. This was the start of a company gaining international significance and launching groundbreaking innovations. Production of intercom systems began as early as 1946 but did not pick up speed until 1960 with the launch of the ST30 intercom system. This was followed by the advanced KV and ECS duplex intercom systems. Export contacts were being established with a number of European countries, and offices were opening abroad including Denmark, Sweden, Germany, France, USA, Great Britain, China and Australia. The first Pamex models were released in the 1970s and intercom development went into overdrive in the early 80's with the microprocessor. The primary product being manufactured during this time was the Pamex MPC that had much success until it was superseded by the TouchLine system. The latest STENTOFON system is the digital communications system AlphaCom used in a variety of applications around the world.

